



- CE Certified
- ISO 8846 MARINE (Ignition Protection)

## ELECTRIC TOILETS

TMC-99902 、TMC-29920 、TMC-29930

TMC-99904 、TMC-29921 、TMC-29932

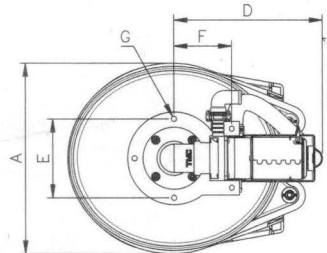
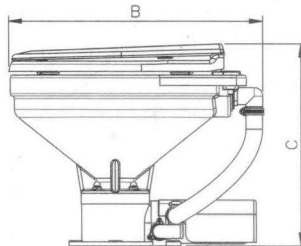
### PRODUCT FEATURE

- Top quality vitreous china bowl.
- Solid plastic seat and cover.
- Self-macerating combined, water in, water out pump.
- Convenient flush operation.
- Flush options - with switch box or flush panel.
- Seat options - with regular seat&cover or slow-closed seat&cover.
- Supplied with 25 to 19 or 38mm adaptors for connecting options.

### SPECIFICATION

CONSUMPTION		FUSE	MAX. HEAD	INLET HOSE	DISCHARGE HOSE
V	A	A	M(FT)	mm(in)	mm(in)
12	18	30	4(13)	25 (1")	25 (1")
24	9	15			

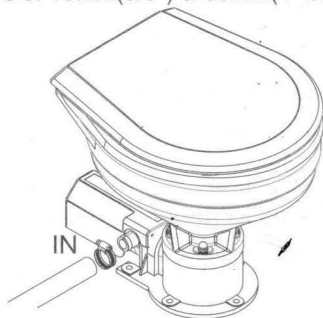
### DIMENSIONS



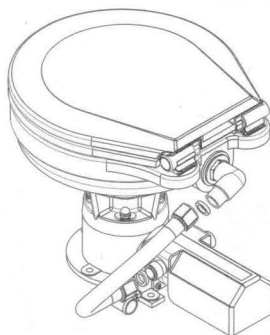
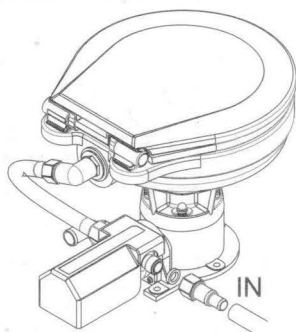
MODEL NO.	A	B	C	D	E	F	G
	mm(in)	mm(in)	mm(in)	mm(in)	mm(in)	mm(in)	mm(in)
TMC-99902 TMC-29920 TMC-29930	360(14.2)	445(17.5)	352(13.9)	269(10.6)	150(5.9)	110(4.3)	10(0.39)
TMC-99904 TMC-29921 TMC-29932	365(14.4)	484(19)	376(14.8)	283(11.1)	150(5.9)	110(4.3)	10(0.39)

# INSTALLATION

- TMC marine toilets can be installed above or below the waterline.
- Inlet and outlet seacock should be easily accessible and be positive shut off valves. If seacock not be conveniently operated from toilet location, install suitable shut off valves for inlet and discharge connections.
- Surface where toilet is mound should be flat to prevent distortion of toilet base.
- Use M8 screws to install through 5 base holes (dia.10mm).
- User may rotate it to the desired position by loosening the 3 screws on the flange.
- Outlet port can be rotated 360°, user may rotate it to the desired position then fasten it by the screws.
- Fasten all pipe connections with clamps.
- Adaptors of 19mm(5/8") & 38mm(1-1/2") are provided for connecting options.

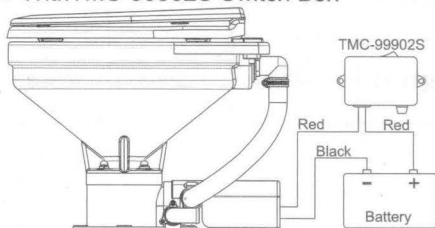


For TMC 29930 & 29932

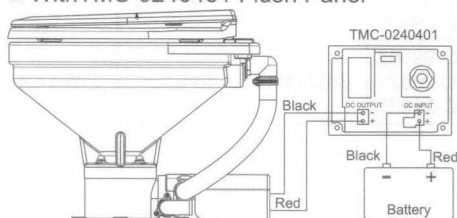


## WIRING DIAGRAM

- With TMC-99902S Switch Box



- With TMC-0240401 Flush Panel



# PLUMBING CONNECTIONS

- TMC marine toilets may be installed above or below the waterline.
- Connect inlet hose using 25mm(1") ID hose. Make sure all inlet connections are airtight and free of sharp bends or restrictions.
- Connect 25mm(1") hose to discharge port and make suitable connection to holding tank or other discharge system. Avoid sharp bends or restrictions.
- For above waterline installations, a check valve (optional) may have to be installed in the flush water intake line to ensure rapid pump priming. To retain water in bowl, make a loop in the discharge line about 20 cm (8 inches) above base of bowl.
- Do not connect inlet hose to a pressurized water system.
- If the toilet is, or can be, below waterline at any normal (including static) attitude of vessel heel and / or trim, a 1" vented loop fitting must be installed in the inlet pipe work. The vented loop fitting must be positioned so it always remains above the waterline at all angles of heel and trim.
- Vented loops installed below water line are required to prevent backflow of the waste.
- The waste can be stored in the holding tank first then discharged to pump out station at the port.

Fig. 1 above waterline

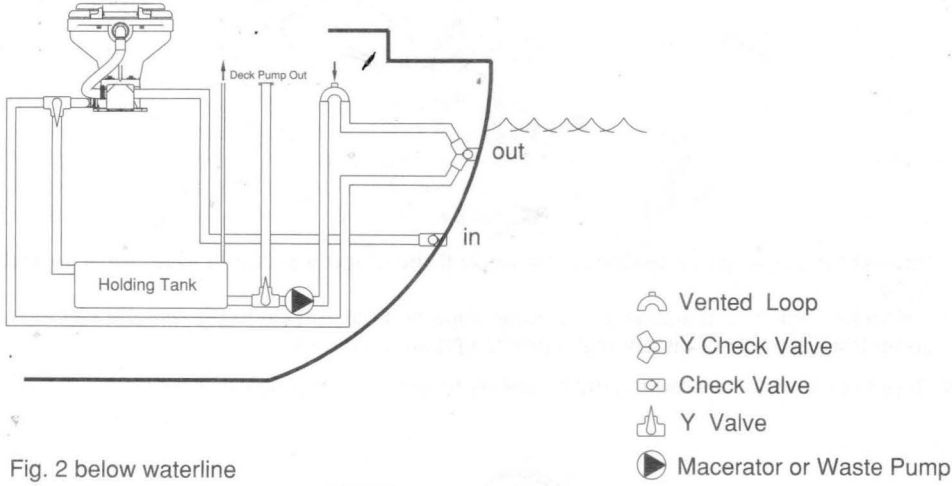
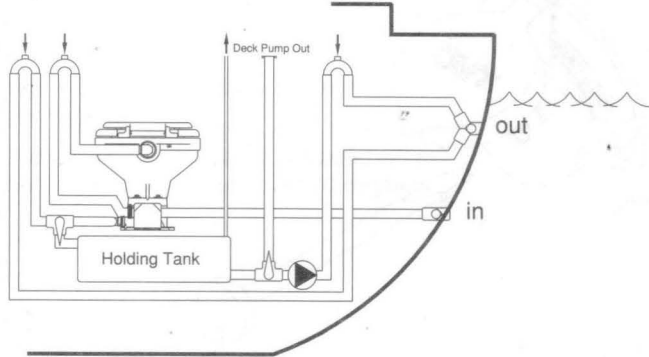


Fig. 2 below waterline



## VENTED LOOPS

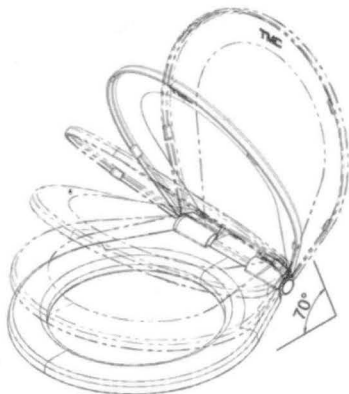
- 25mm(1") for waste outlet discharge.
- 25mm(1") for macerator toilet discharge.
- 38mm(1-1/2") for waste pump discharge.
- 25mm(1") for water inlet discharge.
- Vented loops are required for below waterline installations and hose connections must be double clamped.
- Top of the loop must be above waterline.
- Intake vented loops must be installed between pump and back of the bowl.
- Discharge vented loops must be installed between the discharge of toilet and seacock.
- Do not position the vented loops between the in-let sea-cock and the flushing pump inlet. It will make the flushing pump difficult or harder to prime, and could prevent it from working at all.

## CAUTIONS

- Always close sea-cocks when leaving boat unattended.
- Always close sea-cocks when toilet is not in use.
- Failure to do so may result in flooding which can cause loss of property and life.
- Do Not apply flame or heat to hoses.
- Do Not apply sealing compounds to any hose connection.
- Do Not use thick liquid toilet cleaners or neat bleach because they may damage the valves, gaskets and seals.
- If the toilet is plumbed to the vessels portable water supply you must install an anti-syphon breaker valve on the toilet inlet pipework to prevent water supply contamination.
- Do Not dismantle the product without the help of authorized technician. For any questions, please contact with your original seller or dealer.
- Correct motor polarity (Red to positive (+), Black to negative (-)) is important. Reverse polarity can damage motor and void warranty. Full voltage at the motor is required to properly operate the Electric Toilet. The toilet must be wired in a circuit independent of all other accessories.
- The toilet bowl body is made of vitreous china and it's fragile.
- Do Not drop the product from high place or with heavy force.
- Please handle the product with care.

## SLOW-CLOSE FEATURE

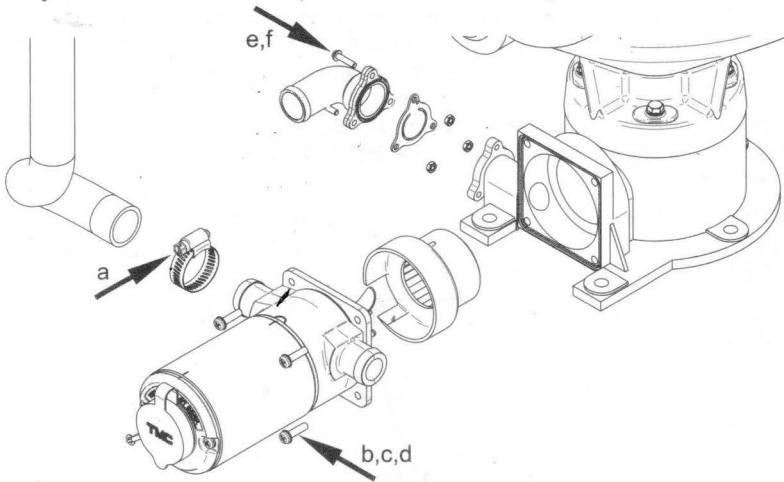
- For TMC 29920, 29921, 29930 & 29932
- Designed to prevent annoying slam or sudden drop of the seat
- Seat & cover can be slow closed individually.
- Slow-close feature will be activated when the seat & cover is bent over 70 degrees.



# TROUBLE SHOOTING

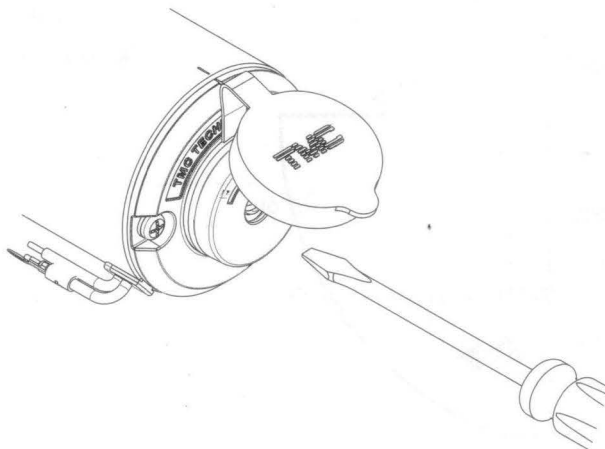
## 1. Waste can not be pumped out due to clogging problem

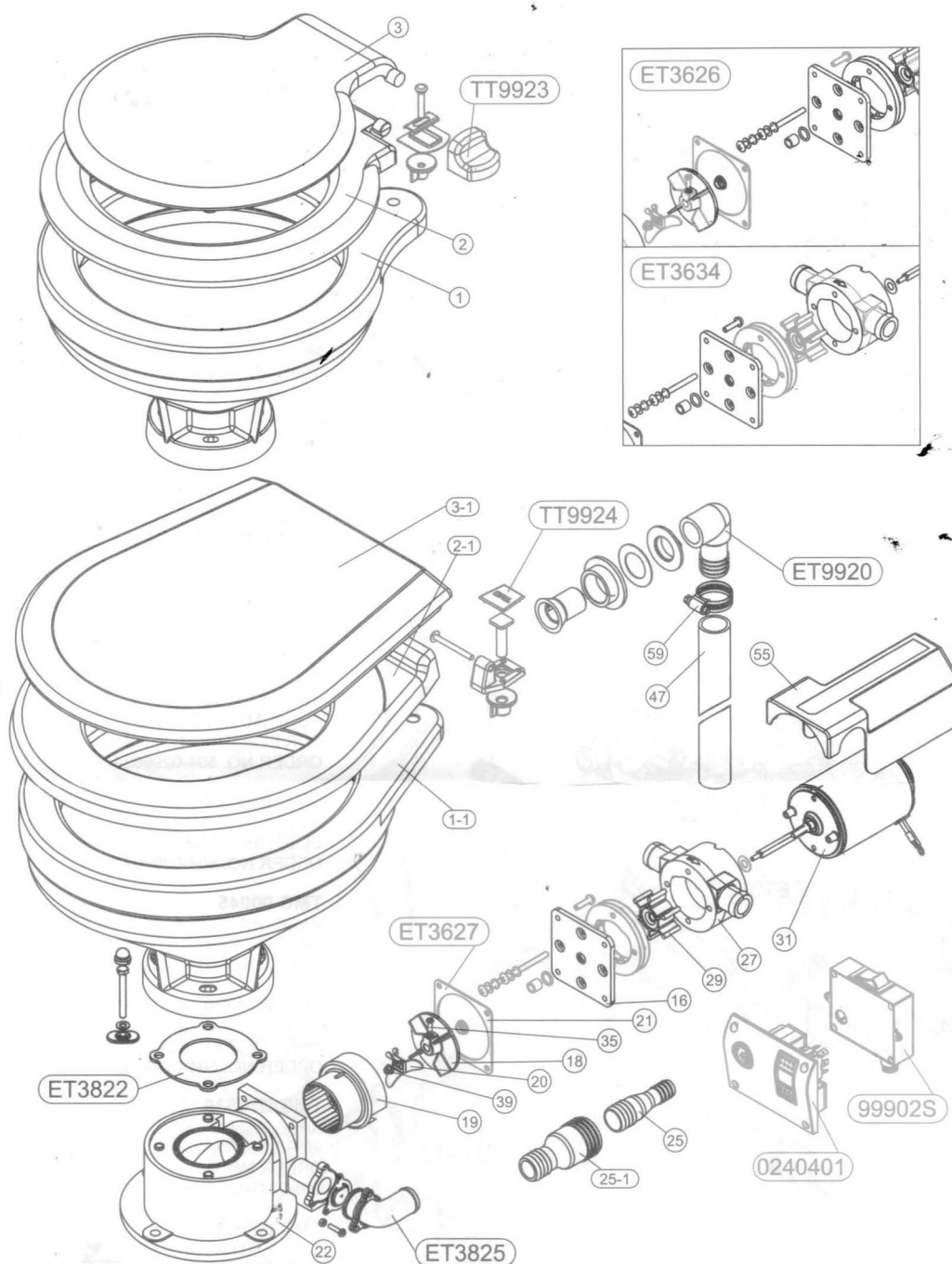
- a. Disconnect the pumping inlet and discharge hoses.
- b. Remove four screws.
- c. Pull out complete motor, pump and macerator assembly from base. Clean out the clogging materials.
- d. After cleaning, follow the indicated direction and install the non-return valve back in position.
- e. Outlet port can be rotated 360°.
- f. User may rotate it to the desired position then fasten it by the screws.



## 2. Impeller may get stuck inside pump body if the electric pump is idled for a period of time.

- Follow the indicated direction to rotate the impeller from outside to prevent the electric pump from damage of instant high current in starting operation.
- Or put some water in bowl to stay for awhile to wet the pump before initial use.





**TMC-00029**

STANDARD SEAT AND COVER  
INCLUDE PARTS TT9923,2,3  
ORDER NO. 504-0299029

**TMC-00041**

DELUXE PLASTIC SEAT AND COVER  
INCLUDE PARTS TT9924,2-1,3-1  
ORDER NO. 504-0299041

**TMC-TT9923**

HINGE SET FOR STANDARD SEAT  
ORDER NO. 504-0299023

**TMC-TT9924**

HINGE SET FOR DELUXE SEAT  
ORDER NO. 504-0299024

**TMC-00036**

PUMP UNIT FOR ELECTRIC TOILET  
INCLUDE PARTS  
ET3627,19,39,20,18,35,16,29,27,31  
ORDER NO.  
504-0299036 12V  
504-0299037 24V

**TMC-ET3626**

PUMP RAZOR KITS  
FOR ELECTRIC TOILET  
ORDER NO. 504-0299026

**TMC-ET3627**

PUMP GASKET KITS  
FOR ELECTRIC TOILET  
ORDER NO. 504-0299027

**TMC-ET3628**

PUMP BODY KITS  
FOR ELECTRIC TOILET  
INCLUDE PARTS ET3634,21,27  
ORDER NO. 504-0299028

**TMC-ET3634**

PUMP IMPELLER KITS  
FOR ELECTRIC TOILET  
ORDER NO. 504-0299034

**TMC-ET9920**

PIPE JOINTS FOR  
ELECTRIC TOILET  
ORDER NO. 504-0299020

**TMC-00038**

BASE UNIT FOR ELECTRIC TOILET  
INCLUDE PARTS ET3825,22  
ORDER NO. 504-0299038

**TMC-ET3825**

BASE PORT KITS  
FOR ELECTRIC TOILET  
ORDER NO. 504-0299025

**TMC-ET3822**

BASE GASKET KITS  
FOR ELECTRIC TOILET  
ORDER NO.  
504-0299022

**TMC-99902S**

STANDARD SWITCH BOX ASSEMBLY  
FOR ELECTRIC TOILET  
ORDER NO.  
302-0020100 12V  
302-0020200 24V

**TMC-0240401**

DELUXE PANEL SWITCH WITH FUSE  
PACKAGE. OPTIONAL ORDER FOR  
ELECTRIC TOILET  
ORDER NO.  
502-2404011 12V  
502-2404012 24V

KEY	DESCRIPTION
1	Closestool Body(99902)
2	Seat Cushion(99902)
3	Closestool Cover(99902)
1-1	Closestool Body(99904)
2-1	Seat Cushion(99904)
3-1	Closestool Cover(99904)
16	Wearplate
18	Centrifugal Impeller
19	Macerator Housing
20	Razor Blade
22	Base

KEY	DESCRIPTION
25	Adaptor
25-1	Adaptor
27	Body
29	Flexible Impeller
31	Motor
35	Set Screw
39	Hexagon Nut
47	Hose(99902)
47-1	Hose(99904)
55	Cover
59	Clamp

**TMC-00041**  
DELUXE PLASTIC SEAT AND COVER  
INCLUDE PARTS TT9924, 2-1, 3-1  
ORDER NO. 504-0299041

**TMC-TT9924**  
HINGE SET FOR DELUXE SEAT  
ORDER NO. 504-0299024

**TMC-00036**  
PUMP UNIT FOR ELECTRIC TOILET  
INCLUDE PARTS  
ET3627, 19, 39, 20, 18, 35, 16, 29, 27, 31  
ORDER NO.  
504-0299036 12V  
504-0299037 24V

**TMC-ET3626**  
PUMP RAZOR KTIS  
FOR ELECTRIC TOILET  
ORDER NO. 504-0299026

**TMC-ET3627**  
PUMP GASKET KITS  
FOR ELECTRIC TOILET  
ORDER NO. 504-0299027

**TMC-ET3628**  
PUMP BODY KITS  
FOR ELECTRIC TOILET  
INCLUDE PARTS ET3634, 21, 27  
ORDER NO. 504-0299028

**TMC-ET3634**  
PUMP IMPELLER KITS  
FOR ELECTRIC TOILET  
ORDER NO. 504-0299034

**TMC-ET9921**  
PIPE JOINTS FOR  
ELECTRIC TOILET  
ORDER NO. 504-0299021

**TMC-00045**  
BASE UNIT FOR ELECTRIC TOILET  
INCLUDE PARTS ET4530, 22-1  
ORDER NO. 504-0299045

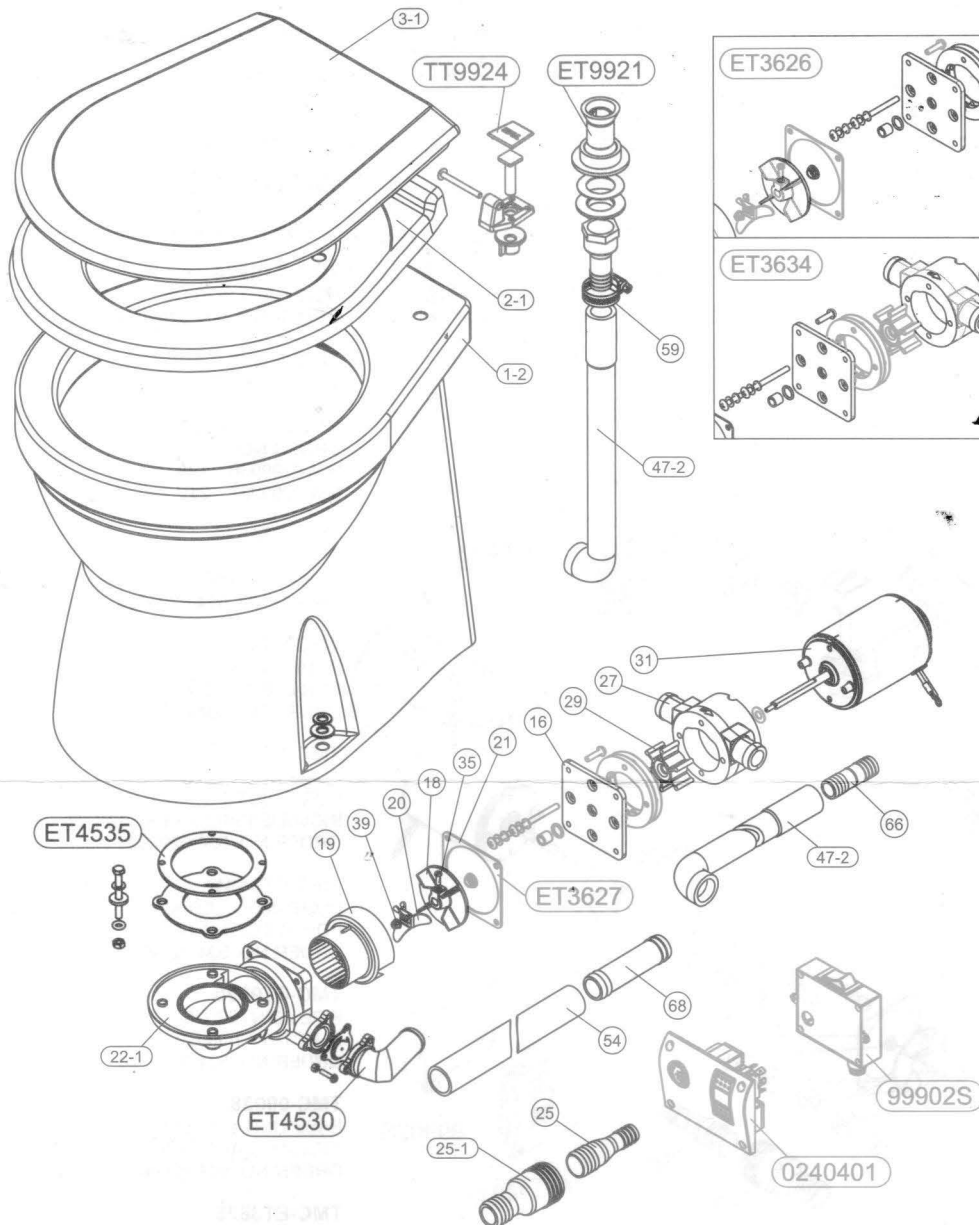
**TMC-ET4530**  
BASE PORT KITS  
FOR ELECTRIC TOILET  
ORDER NO. 504-0299030

**TMC-ET4535**  
BASE GASKET KITS  
FOR ELECTRIC TOILET  
ORDER NO.  
504-0299035

**TMC-00046**  
CONVERSION KITS FOR  
ELECTRIC TOILET  
(W/O #1-2, 2-1, 3-1, TT9924)  
ORDER NO.  
504-0299461 12V  
504-0299462 24V

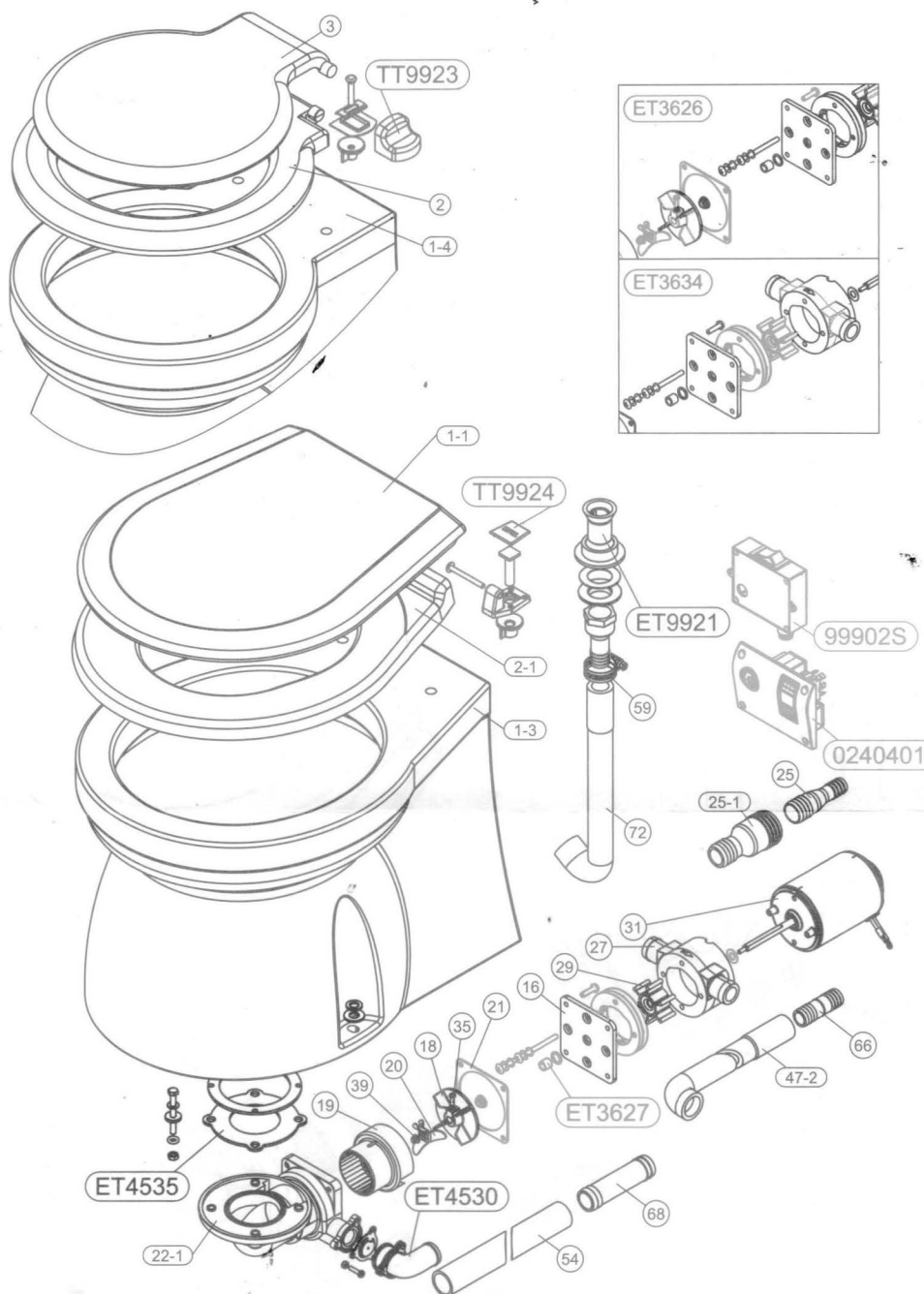
**TMC-99902S**  
STANDARD SWITCH BOX ASSEMBLY  
FOR ELECTRIC TOILET  
ORDER NO.  
302-0020100 12V  
302-0020200 24V

**TMC-0240401**  
DELUXE PANEL SWITCH WITH FUSE  
PACKAGE. OPTIONAL ORDER FOR  
ELECTRIC TOILET  
ORDER NO.  
502-2404011 12V  
502-2404012 24V



KEY	DESCRIPTION
1-2	Closestool Body
2-1	Seat Cushion
3-1	Closestool Cover
16	Wearplate
18	Centrifugal Impeller
19	Macerator Housing
20	Razor Blade
22-1	Base
25	Adaptor
25-1	Adaptor

KEY	DESCRIPTION
27	Body
29	Flexible Impeller
31	Motor
35	Set Screw
39	Hexagon Nut
47-2	Hose
54	Hose
59	Clamp
66	Inner Pipe Joint
68	Adaptor



**TMC-00029**  
STANDARD SEAT AND COVER  
INCLUDE PARTS TT9923,2,3  
ORDER NO. 504-0299029

**TMC-00041**  
DELUXE PLASTIC SEAT AND COVER  
INCLUDE PARTS TT9924,2-1,3-1  
ORDER NO. 504-0299041

**TMC-TT9923**  
HINGE SET FOR STANDARD SEAT  
ORDER NO. 504-0299023

**TMC-TT9924**  
HINGE SET FOR DELUXE SEAT  
ORDER NO. 504-0299024

**TMC-00036**  
PUMP UNIT FOR ELECTRIC TOILET  
INCLUDE PARTS  
ET3627, 19, 39, 20, 18, 35, 16, 29, 27, 31  
ORDER NO.  
504-0299036 12V  
504-0299037 24V

**TMC-ET3626**  
PUMP RAZOR KTIS  
FOR ELECTRIC TOILET  
ORDER NO. 504-0299026

**TMC-ET3627**  
PUMP GASKET KITS  
FOR ELECTRIC TOILET  
ORDER NO. 504-0299027

**TMC-ET3628**  
PUMP BODY KITS  
FOR ELECTRIC TOILET  
INCLUDE PARTS ET3634, 21, 27  
ORDER NO. 504-0299028

**TMC-ET3634**  
PUMP IMPELLER KITS  
FOR ELECTRIC TOILET  
ORDER NO. 504-0299034

**TMC-ET9921**  
PIPE JOINTS FOR  
ELECTRIC TOILET  
ORDER NO. 504-0299021

**TMC-00045**  
BASE UNIT FOR ELECTRIC TOILET  
INCLUDE PARTS ET4530, 22-1  
ORDER NO. 504-0299045

**TMC-ET4530**  
BASE PORT KITS  
FOR ELECTRIC TOILET  
ORDER NO. 504-0299030

**TMC-ET4535**  
BASE GASKET KITS  
FOR ELECTRIC TOILET  
ORDER NO.  
504-0299035

**TMC-99902S**  
STANDARD SWITCH BOX ASSEMBLY  
FOR ELECTRIC TOILET  
ORDER NO.  
302-0020100 12V  
302-0020200 24V

**TMC-0240401**  
DELUXE PANEL SWITCH WITH FUSE  
PACKAGE. OPTIONAL ORDER FOR  
ELECTRIC TOILET  
ORDER NO.  
502-2404011 12V  
502-2404012 24V

KEY	DESCRIPTION
1-4	Closestool Body(99909)
2	Seat Cushion(99909)
3	Closestool Cover(99909)
1-3	Closestool Bdy(99910)
2-1	Seat Cushion(99910)
3-1	Closestool Cover(99910)
16	Wearplate
18	Centrifugal Impeller
19	Macerator Housing
20	Razor Blade
22-1	Base
25	Adaptor

KEY	DESCRIPTION
25-1	Adaptor
27	Body
29	Flexible Impeller
31	Motor
35	Set Screw
39	Hexagon Nut
47-2	Hose
54	Hose
59	Clamp
66	Inner Pipe Joint
68	Adaptor
72	Hose

•TMC TOILET SERVICE PARTS ARE SOLD BY PACKAGE.  
•INDIVIDUAL PART LIST IS FOR REFERENCE ONLY.